

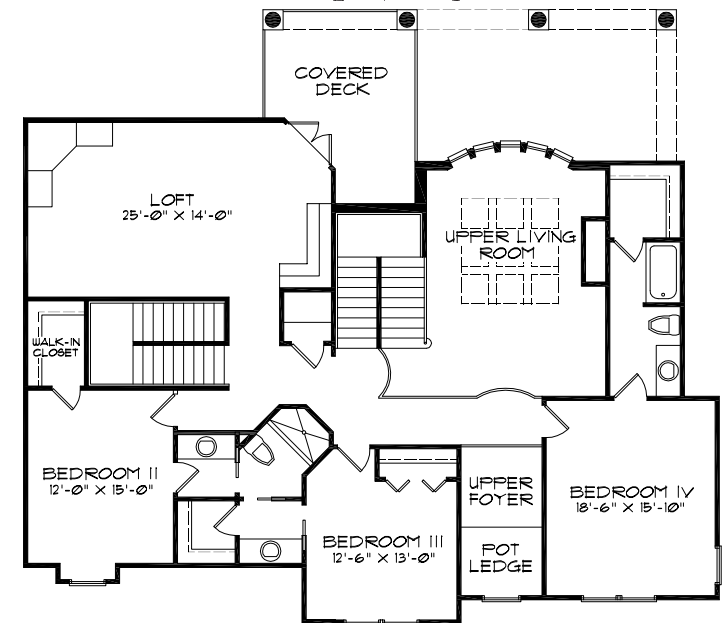
1ST FLOOR PLAN

The Portofino

BY



CAMPAGNA HOMES



2ND FLOOR PLAN

ALL DIMENSIONS ARE APPROXIMATE & ARE SUBJECT TO CHANGE

LIVING AREA = 5,626 SQ FT
4 BEDROOMS, 4 BATHS, DEN, BILLIARD ROOM, MEDIA ROOM, 4-CAR GARAGE

© - COPYRIGHT 2006
CAMPAGNA HOMES INC.
ALL RIGHTS RESERVED

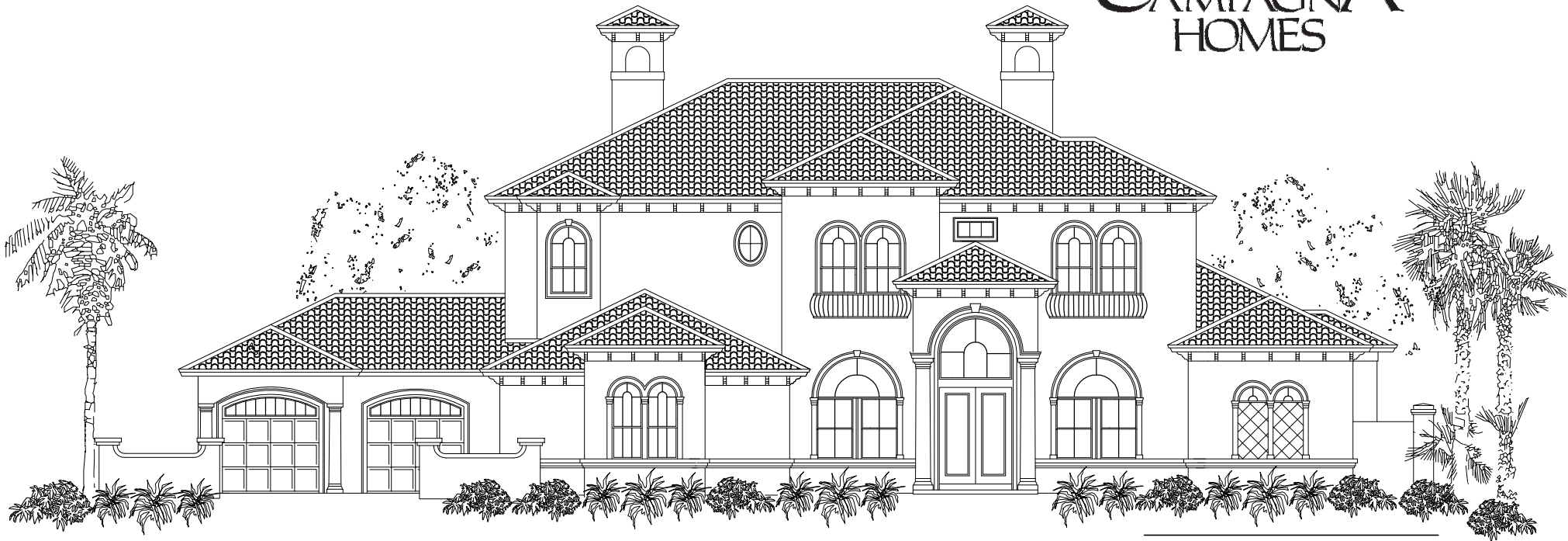
SALES OFFICE:
955 E MLK DR SUITE F
TARPON SPRINGS, FLORIDA
PH: (727)-944-3577

The Portofino

BY



CAMPAGNA HOMES



FRONT ELEVATION